

BUILDING EMERGENCY ACTION PLAN

Smith Memorial Hall u0060 / 805 S. Mathews Ave., Urbana, IL

In any emergency situation you have a choice: **RUN**, **HIDE**, or **FIGHT**.

Only proceed if safe to do so.

RUN

Evacuation Assembly Areas¹

1. On Quad BEHIND Foellinger Auditorium (between Foellinger & Undergraduate Library)
2. Inside Main Library (1408 W. Gregory Dr.)

HIDE

Storm Refuge Areas²

1. Lower Level hallways
2. Lower Level classrooms (if available)

Active Threat¹

1. Secure classroom.
2. Secure your office.

FIGHT

RUN

If you can safely leave the building, **RUN**.

HIDE

If you cannot safely leave, find a safe place to **HIDE**.

FIGHT

If you cannot RUN away safely or cannot HIDE, be prepared to **FIGHT** for your life.

NEED HELP?

Areas of Rescue Assistance²

There are no designated Areas of Rescue Assistance in this building. In a fire emergency move to the nearest exit on your floor without blocking the flow of traffic. If conditions deteriorate, move into the stair landing behind the closed door, and await help.

More Info: <http://police.illinois.edu/run-hide-fight/>

¹ Contact Emergency Management at 217-333-1216 to identify appropriate locations.

² Contact Code Compliance & Fire Safety at 217-265-5268 to identify appropriate locations.

BUILDING EMERGENCY ACTION PLAN

Smith Memorial Hall u0060 / 805 S. Mathews Ave., Urbana, IL

Emergency Response Recommendations

The Department of Homeland Security and the University of Illinois at Urbana-Champaign Office of Campus Emergency Planning recommend the following three responses to any emergency on campus: **RUN > HIDE > FIGHT**

Only follow these actions if safe to do so. When in doubt, follow your instincts—you are your own best advocate!

RUN

Action taken to leave an area for personal safety.

- Take the time now to learn the different ways to leave your building **before** there is an emergency.
- Evacuations are mandatory for fire alarms and when directed by authorities. **No exceptions!**
- Evacuate immediately. Pull manual fire alarm to prompt a response for others to evacuate.
- Take critical personal items only (keys, purse, and outerwear) and close doors behind you.
- Assist those who need help, but carefully consider whether you may put yourself at risk.
- Look for **EXIT** signs indicating potential egress/escape routes.
- If you are not able to evacuate, go to an Area of Rescue Assistance.
- Evacuate to Evacuation Assembly Area and remain until additional instructions are given.
- Alert authorities to those who may need assistance.
- Do not re-enter building until informed by emergency response personnel that it is safe to return.

ACTIVE THREAT:

- If it is safe to do so run out of the building. Get as far away as possible. Do not go to the Evacuation Assembly Area.
-

HIDE

Action taken to seek immediate shelter indoors when emergency conditions do not warrant or allow evacuation, such as for severe weather.

- Take the time now to learn the different ways to seek shelter within your building **before** there is an emergency.
- If you are outside, proceed to the nearest protective building.
- If sheltering-in-place due to severe weather, proceed to the identified Storm Refuge Area or to the lowest, most interior area of the building away from windows or hazardous equipment or materials.

ACTIVE THREAT:

- Lock or barricade your area.
 - Get to a place where the threat cannot see you.
 - Place cell phones on **silent**.
 - Do not make any noise.
 - Do not come out until you receive an Illini-Alert advising you it is safe.
-

FIGHT

Action taken as a last resort to increase your odds for survival.

ACTIVE THREAT:

- If you cannot run away safely or cannot hide, **be prepared to fight with anything available to increase your odds for survival.**
-

BUILDING EMERGENCY ACTION PLAN

Smith Memorial Hall u0060 / 805 S. Mathews Ave., Urbana, IL

Emergency Notification Systems

University Notifications — The University of Illinois at Urbana-Champaign **MAY** utilize any of the following mechanisms to notify the campus community of an emergency situation:

- **Illini-Alert Emergency Text Notification System** — Illini-Alert is an “opt-in” system designed to deliver text messages to those who have registered for the service. Illini-Alert automatically triggers mass mail and Twitter notifications. Sign up at <http://emergency.illinois.edu/>.
- **Public Broadcast Media Outlets** — The campus will utilize all necessary television and radio outlets to provide emergency information to the campus community.
- **NOAA Weather Radios** — The National Weather Service in Lincoln, Illinois, will post an alert message on NOAA weather radios.
- **Cable Channel UI-7** — Comcast Cable channel 7 will provide a scripted message on the bottom of the television screen. This can be utilized either before or after the Emergency Alert System is used.
- **265-UIPD** — An emergency voice message system will be provided via this telephone number to provide emergency information.
- **Telephone Alert System** — A systematic telephone call list or “telephone tree” designed to notify individuals throughout campus.

Access to University Notification mechanisms may be limited for occupants during an emergency. Buildings may need to provide their own Building and Department Internal Emergency Notifications.

Building and Department Internal Emergency Notifications - Individual buildings and departments may utilize their own mechanisms for communicating emergency information (i.e.: bullhorns, telephone trees, public address systems, and face-to-face contact). Ensure the following list is comprehensive enough to provide coverage for all areas. The following emergency notification system(s) and individuals have been identified specifically for your building to provide emergency information:

Emergency Notification System	Primary Communicator	Backup Communicator
Communicating with Music MB	Ricardo Herrera	Chip McNeill
Skype for Business/Microsoft Teams	LaShae Hughes-McCray	Nathan Mandel
Email	LaShae Hughes-McCray	Jenny Phillips
Pulling Fire Alarm in fire emergency only	Chip McNeill	Bill Moersch
Door – to – door contact	Floor Coordinators	Backup Coordinators

BUILDING EMERGENCY ACTION PLAN

Smith Memorial Hall u0060 / 805 S. Mathews Ave., Urbana, IL

Floor Coordinators

Individuals responsible for assisting with the orderly evacuation or sheltering-in-place of all personnel within their area of responsibility and physically accounting for those individuals once convened at the evacuation assembly area(s).

Role of Floor Coordinators

- All actions should be done only if it is safe to do so.
- Emergency response personnel (police/fire) have full authority to order an evacuation or shutdown (see Appendix C if applicable). Floor Coordinators and the Building Emergency Management Team can initiate an evacuation and/or shutdown of the building.
- Individuals identified as Floor Coordinators assume the role voluntarily and understand they are not considered emergency responders.
- Floor Coordinators must be physically and emotionally able to perform the necessary functions of providing assistance with notification, evacuation or sheltering-in-place. (This may include assisting persons with functional needs.)
- Floor Coordinators should report observations of persons in need of rescue assistance to emergency responders or Building Emergency Management Team members.
- Floor Coordinators should report observed damage of building systems to emergency responders or Building Emergency Management Team members.

Floor Coordinators and Areas of Responsibility

Floor Coordinator	Backup Coordinator	Area of Responsibility
William Moersch	Chip McNeill	Basement
Larry Gray	Craig Deets	Floor 1
Ricardo Herrera	Nelson Lee	Floor 2
Larry Gray	Richard Dole (GA)	Floor 3

BUILDING EMERGENCY ACTION PLAN

Smith Memorial Hall u0060 / 805 S. Mathews Ave., Urbana, IL

The following information has been voluntarily provided by those who have self-identified themselves as having a functional need. This information, since it is part of the BEAP, will be shared with employees within this building.

Persons with Functional Needs

The following are **self-identified** persons with functional needs who may request evacuation, shelter-in-place or any other types of reasonable assistance during an emergency:

	Name	Cell	Office Phone	Location
Person	None identified			
Buddy				
Special Need				

	Name	Cell	Office Phone	Location
Person				
Buddy				
Special Need				

	Name	Cell	Office Phone	Location
Person				
Buddy				
Special Need				

	Name	Cell	Office Phone	Location
Person				
Buddy				
Special Need				

	Name	Cell	Office Phone	Location
Person				
Buddy				
Special Need				

	Name	Cell	Office Phone	Location
Person				
Buddy				
Special Need				

	Name	Cell	Office Phone	Location
Person				
Buddy				
Special Need				

BUILDING EMERGENCY ACTION PLAN

Smith Memorial Hall u0060 / 805 S. Mathews Ave., Urbana, IL

Building Emergency Management Team Contact Information

Name	Cell	Office Phone	Home Phone	Email
Jeffrey Sposato	(713)371-6847	(217)300-8781	n/a	jsposato@illinois.edu
Nathan Mandel	(217)979-3376	(217)300-3994	n/a	nmandel2@illinois.edu
Miranda Molina	(708)543-1326	TBD	n/a	Mcmolin2@illinois.edu

Attributes of Building Emergency Management Team Members

- May have authority to make overall decisions for the building and/or department.
- Has thorough knowledge of the building's operational needs.
- Able and willing to serve as a liaison to emergency responders and/or University administrators regarding, but not limited to, emergency needs, status reports, communications.
- May distribute information to building occupants or gather information needed for dissemination to the Office of Public Affairs.
- May maintain financial and administrative records.
- Should have understanding of other team member's roles and responsibilities to provide team continuity and support if one or more members are unavailable during emergency.

Roles of Building Emergency Management Team Members

- Planning and Preparedness Actions
 - Assist with identifying Evacuation Assembly Area(s).
 - Assist with identifying Storm Refuge Area(s).
 - Assist with identifying Command Post Location.
 - Assist with identifying Areas of Rescue Assistance.
 - Establish Building and Departmental Internal Emergency Notification list.
 - Identify Floor Coordinators and provide proper training and/or guidance.
 - Solicit the list of **Self-Identified** Persons with Functional Needs.
 - Prepare and submit BEAP to Office of Campus Emergency Planning for approval.
 - Review and update BEAP annually.
 - Create and establish annual training and exercise schedules to test functionality of BEAP.
- Response Actions
 - Initiate Building and Departmental Internal Emergency Notifications to occupants when emergency has been verified.
 - Deploy Floor Coordinators to evacuate or shelter-in-place as required.
 - Building Emergency Management Team Members report to designated Command Post.

If the emergency requires the **BUILDING EMERGENCY MANAGEMENT TEAM:**

Building Command Post

1. Foellinger Auditorium, Stage area (709 S. Mathews Ave.)

BUILDING EMERGENCY ACTION PLAN

Smith Memorial Hall u0060 / 805 S. Mathews Ave., Urbana, IL

Phone List

METCAD (Metropolitan Computer-Aided Dispatch) — 911

Primary public safety consolidated dispatch center serving Champaign County for ALL police, fire, and emergency medical service (EMS) response. If you require any type of emergency response, call 911 from a cellular or any landline telephone.

University Police — 217-333-1216

Non-emergency/non-police response number for information on public safety, personal safety, and workplace safety.

Office of Campus Emergency Planning — 217-333-1216

Serves as the focal point for emergency planning and preparedness questions, issues and activities.

Code Compliance and Fire Safety — 217-265-5268

Coordinates fire and life safety programs and the building and fire code compliance functions for the campus.

Facilities and Services — 217-333-0340

Provides maintenance and repair, utility services, construction, engineering, facilities planning and custodial services for University-owned buildings/facilities.

Division of Research Safety — 217-333-2755

Assists campus units in identifying and managing biological, chemical and radiological hazards within the campus environment.

Office of Public Affairs — 217-333-5010

Determines what information to disseminate to the media before, during, and after an emergency. The Office of Public Affairs will determine, at the time of the incident, who within the building is authorized to disseminate information to the media.

BUILDING EMERGENCY ACTION PLAN

Smith Memorial Hall u0060 / 805 S. Mathews Ave., Urbana, IL

Definitions

Area of Rescue Assistance — An area where people, including those with functional needs, can go to await assistance if they are not able to evacuate or get to another area of safety.

Building Command Post — A physical or virtual Command Post utilized by Building Emergency Management Team members to proactively manage an emergency or disaster.

Building Emergency Action Plan (BEAP) — A document that consists of emergency procedures to help facilitate and organize building occupant actions during an emergency.

Building Evacuation — Action taken to leave an area for personal safety.

Emergency Responders — Individuals specifically trained for emergency response, including police, fire, ambulance, public health and public works personnel.

Evacuation Assembly Area — The location where all evacuees will convene once an order to evacuate is given.

Floor Coordinators — Individuals responsible for assisting with the orderly evacuation or sheltering-in-place of all personnel within their area of responsibility and physically accounting for those individuals once convened at the evacuation assembly area(s).

Functional Needs — The needs of an individual who under usual circumstances is able to function on their own or with support systems. However, during an emergency, their level of independence may be challenged.

Shelter-in-Place — Action taken to seek immediate shelter indoors when emergency conditions do not warrant or allow evacuation.

Storm Refuge Area — Specific locations within University buildings/facilities that provide reasonable protection from severe weather. Not all University buildings/facilities have Storm Refuge Areas.

BUILDING EMERGENCY ACTION PLAN

Smith Memorial Hall u0060 / 805 S. Mathews Ave., Urbana, IL

Preparedness

Emergency preparedness is ultimately the responsibility of every faculty, staff, student, and visitor at the University of Illinois at Urbana-Champaign. Every occupant of a building should prepare for emergencies and disasters through the following methods:

- Sign up for the campus' emergency messaging system called "Illini-Alert" at: <http://emergency.illinois.edu/>
- Keep an Emergency Response Guide near your workspace. If you do not have one, request one through Office of Campus Emergency Planning (333-1216) or download at: <http://police.illinois.edu/ERG>
- Follow Illini-Alert @IlliniAlert, UIPD @UIPD and Illinois Crime Alert @CrimeAlertIL on Twitter.
- Take the time to visit the Division of Public Safety's website at: <http://police.illinois.edu/> and educate yourself on the resources available to you.
- Make plans and preparations before an incident occurs.
- Use the "buddy system" when planning for emergency response actions.
- Maintain accountability of your personal belongings.
- Keep your work area(s) clean and free of debris and other combustible materials.
- Become familiar with your work area(s) and building. Pay attention to the location of evacuation maps (if available), fire extinguishers, fire alarm pull stations, and other fire and life safety equipment in the building.
- Recognize potential fire hazards and report them immediately.
- Remain aware of your surroundings and immediately call 911 to report suspicious persons or activities.
- Actively participate in safety training, including but not limited to fire extinguisher training, fire evacuation drills, first aid training and self-defense training.
- Annually review the building emergency plan and make recommendations for improvement to your Emergency Management Team Members.
- Create a preparedness kit to keep in or near your workspace. Visit <http://ready.gov/>.

This Building Emergency Action Plan (BEAP) is to be used in conjunction with the Emergency Response Guide (ERG), which provides recommendations for response actions to specific emergency events:

<http://police.illinois.edu/ERG>

Resource List

<http://police.illinois.edu/beap-resources>

BUILDING EMERGENCY ACTION PLAN

Smith Memorial Hall u0060 / 805 S. Mathews Ave., Urbana, IL

Record of Changes

Date	Changed By	Description of Change
01/21/2014	Nathan Mandel	Creation of document
11/20/2014	Jim Gortner	Annual update
04/09/2019	Nathan Mandel	Annual update
01/03/2023	Nathan Mandel	2-year update

Acknowledgement

The purpose of this BEAP is to establish a directory of key building personnel, provide general emergency response procedures, and promote planning, education and training for employees as required by federal and state law. This BEAP should be reviewed, updated, and exercised annually by all appropriate personnel. In addition, this BEAP should be distributed to all building employees.

The following individuals have reviewed and affirm this document for use by campus building occupants to support the emergency planning functions for the University of Illinois at Urbana-Champaign.

Director of Public Safety Alice Cary date: 03/08/23

Assistant Director of Emergency Management Sherry A. Wooten date: 03/10/2023

Associate Director Campus Code Compliance & Fire Safety Mike Brown date: 03/08/23

Senior Administrator(s) Nathan A. Mandel date: 03/14/2023

_____ date: _____

_____ date: _____

Revised: 01/03/2023
Prepared By: Nathan Mandel

BUILDING EMERGENCY ACTION PLAN

Smith Memorial Hall u0060 / 805 S. Mathews Ave., Urbana, IL

Appendix A — Building Maps

Legend:

Evacuation
Assembly

Evacuation Assembly Area — The location where all evacuees will convene once an order to evacuate is given.

EXIT

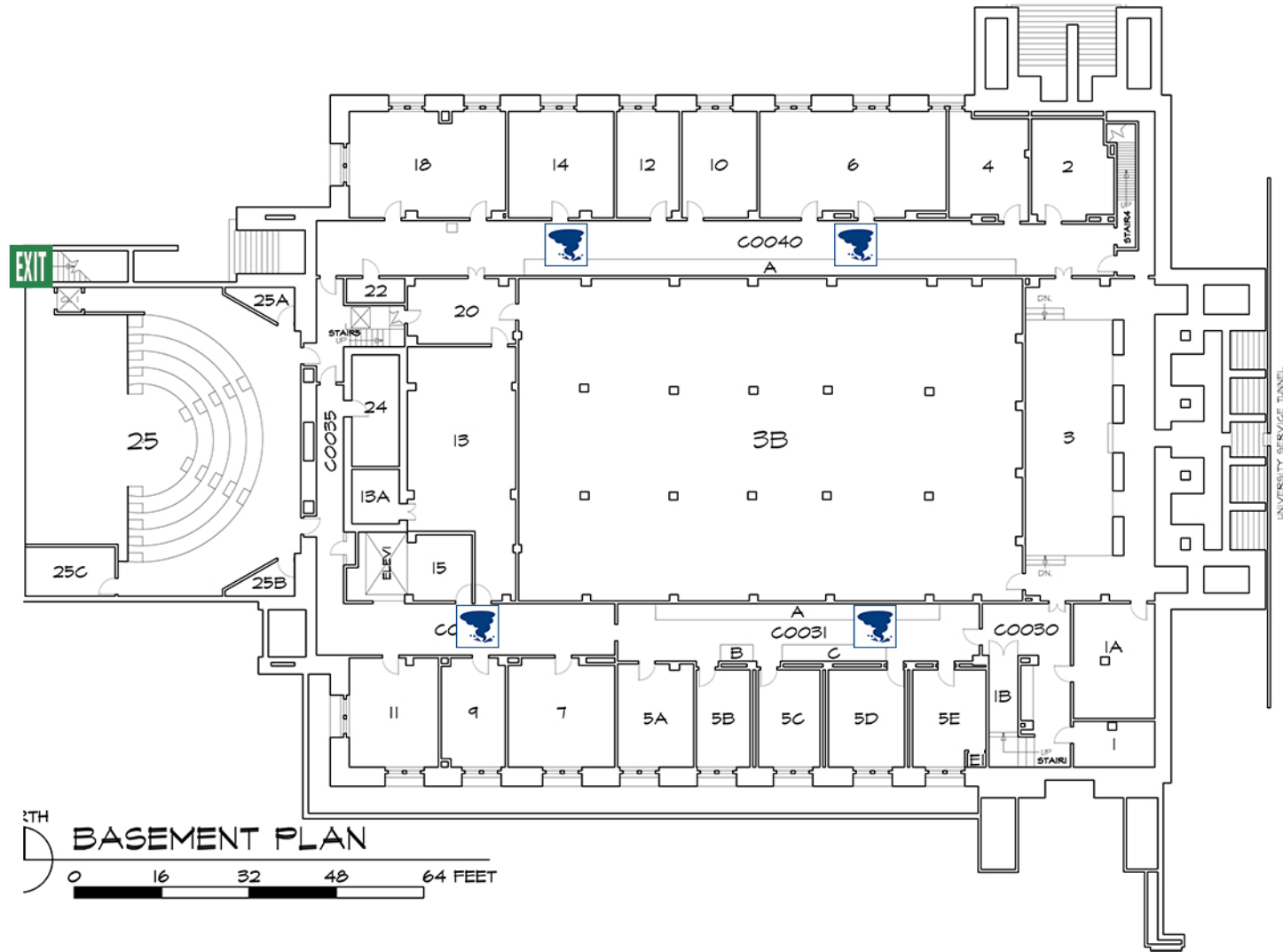
Exit — Designated route out of the building.



Area of Rescue Assistance — An area where people, including those with functional needs, can go to await assistance if they are not able to evacuate or get to another area of safety.



Storm Refuge Area — Specific locations within University buildings/facilities that provide reasonable protection from severe weather. Not all University buildings/facilities have Storm Refuge Areas.



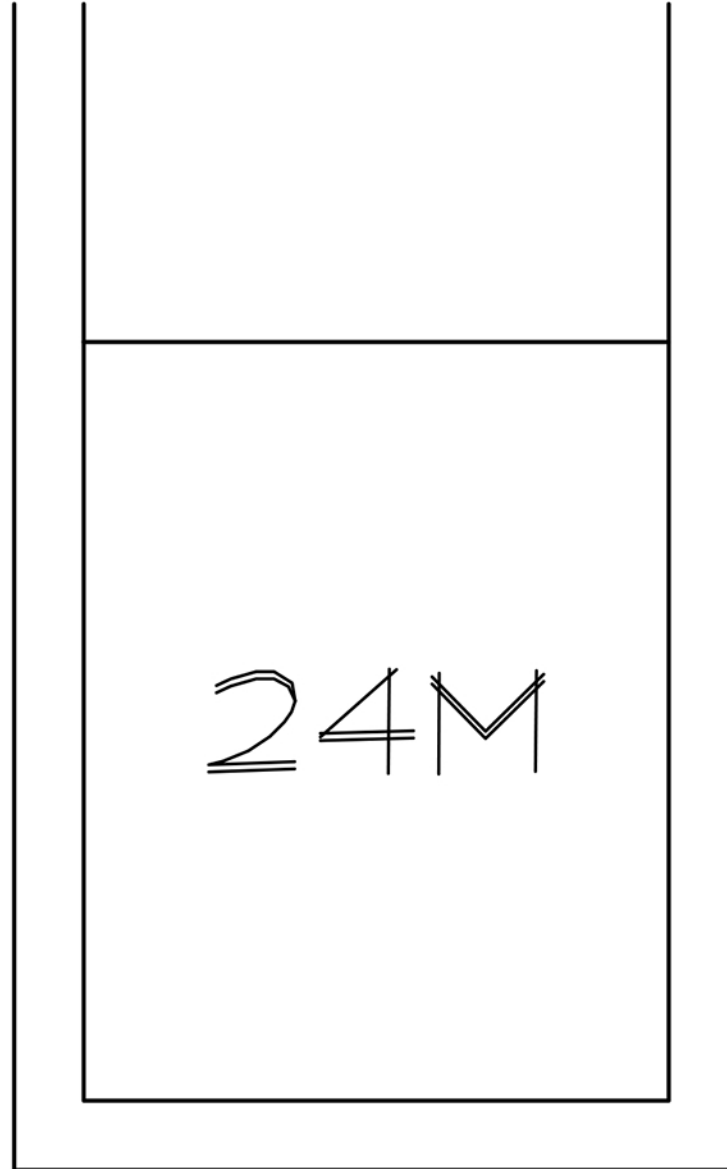
Smith Memorial Hall
 #0060 — 2021/07/21
 Basement

Evacuation Assembly Areas:
 1. On Quad BEHIND Foellinger
 2. Inside Main Library

RUN
 Leaving the area quickly
 is the best option
 if it is safe to do so

HIDE
 When you can't
 or don't want to run,
 take shelter indoors.

FIGHT
 As a last resort, you may
 need to fight to increase
 your chances of survival



Smith Memorial Hall
#0010 — 2021/07/21
Basement Mezzanine

Evacuation Assembly Areas:
1. On Quad BEHIND Foellinger
2. Inside Main Library

RUN

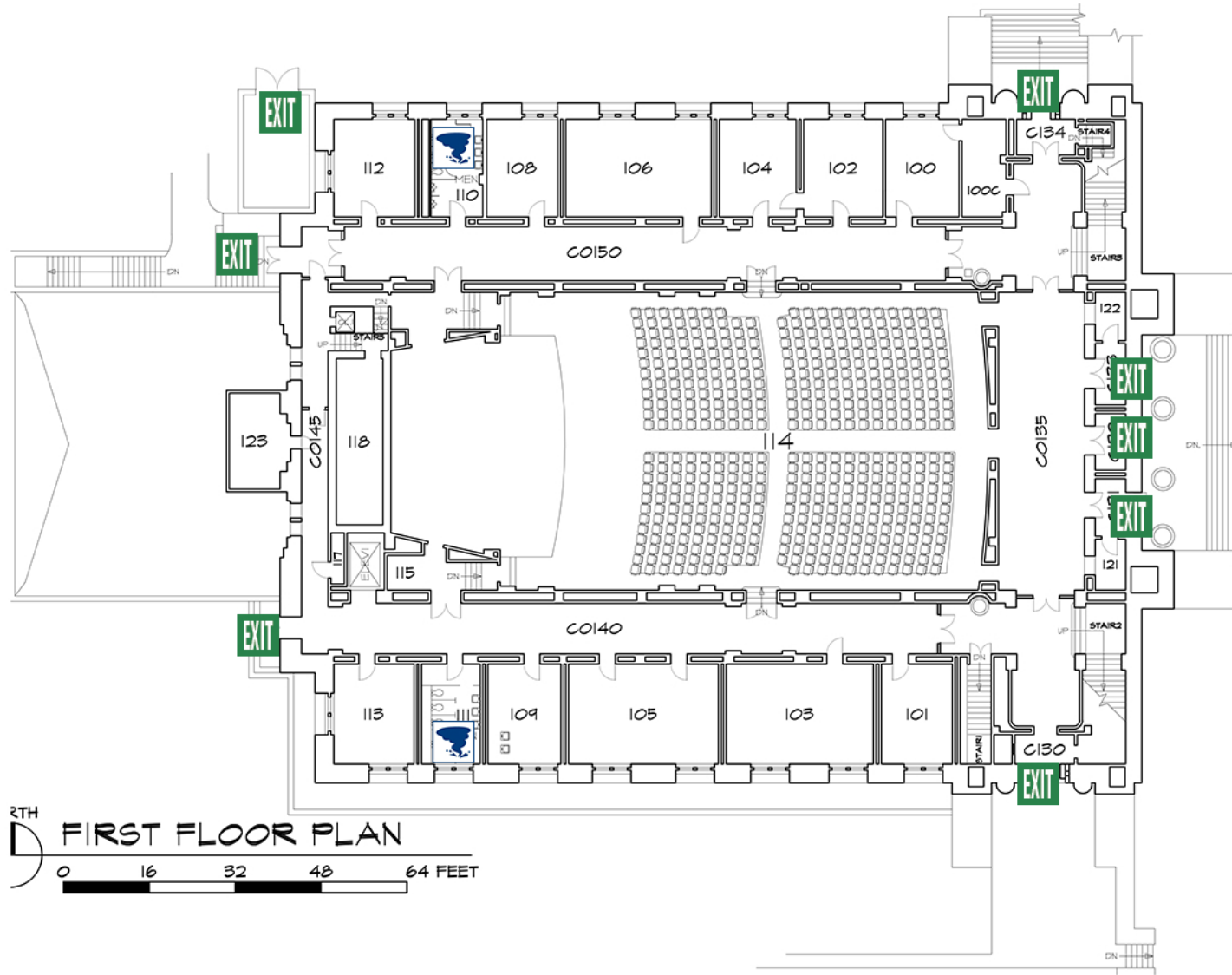
Leaving the area quickly is the best option if it is safe to do so

HIDE

When you can't or don't want to run, take shelter indoors.

FIGHT

As a last resort, you may need to fight to increase your chances of survival



2TH **FIRST FLOOR PLAN**
 0 16 32 48 64 FEET

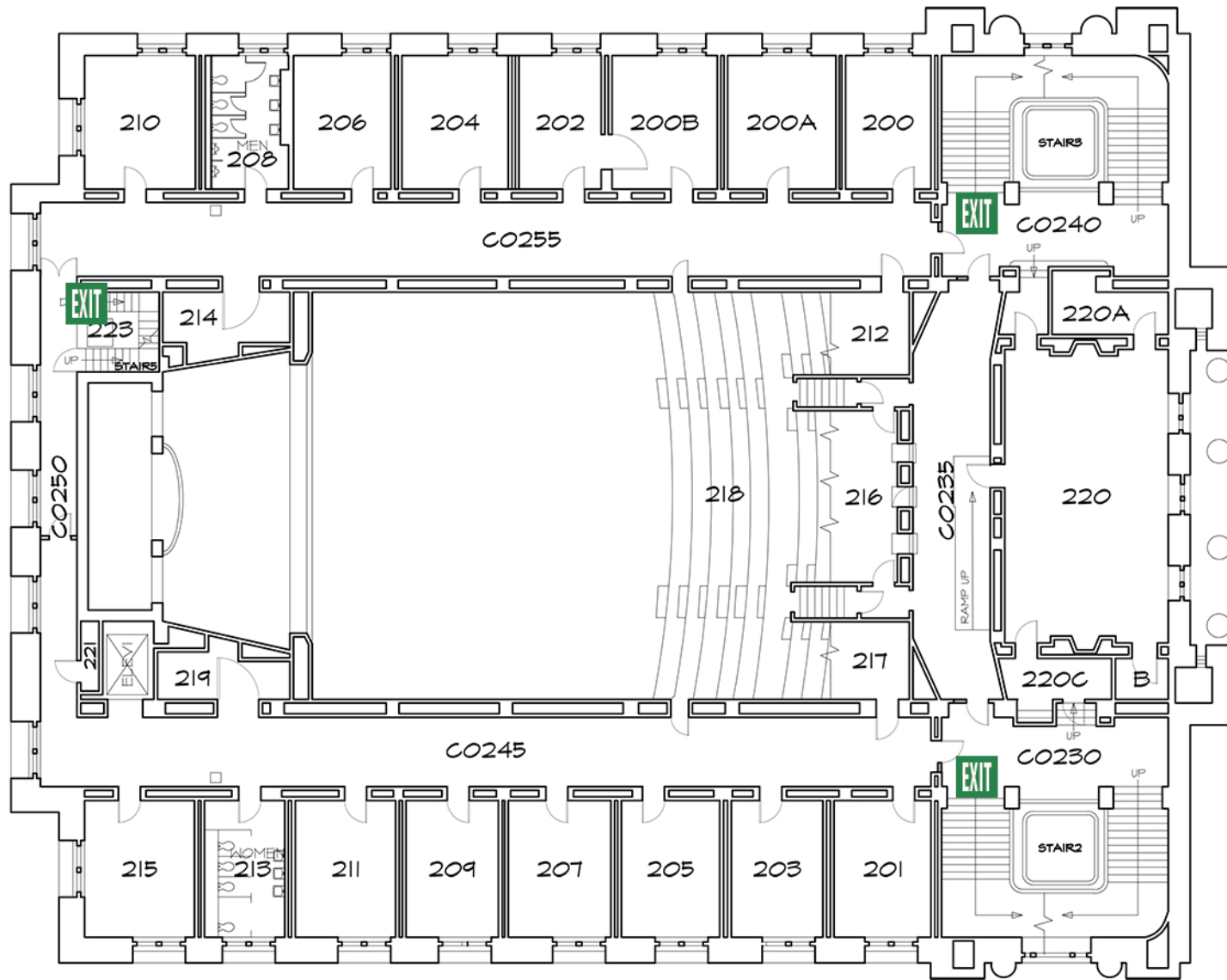
Smith Memorial Hall
 #0010 — 2021/07/21
 First Floor

Evacuation Assembly Areas:
 1. On Quad BEHIND Foellinger
 2. Inside Main Library

RUN
 Leaving the area quickly
 is the best option
 if it is safe to do so

HIDE
 When you can't
 or don't want to run,
 take shelter indoors.

FIGHT
 As a last resort, you may
 need to fight to increase
 your chances of survival



Smith Memorial Hall
 #0010 — 2021/07/21
 Second Floor

Evacuation Assembly Areas:
 1. On Quad BEHIND Foellinger
 2. Inside Main Library

RUN

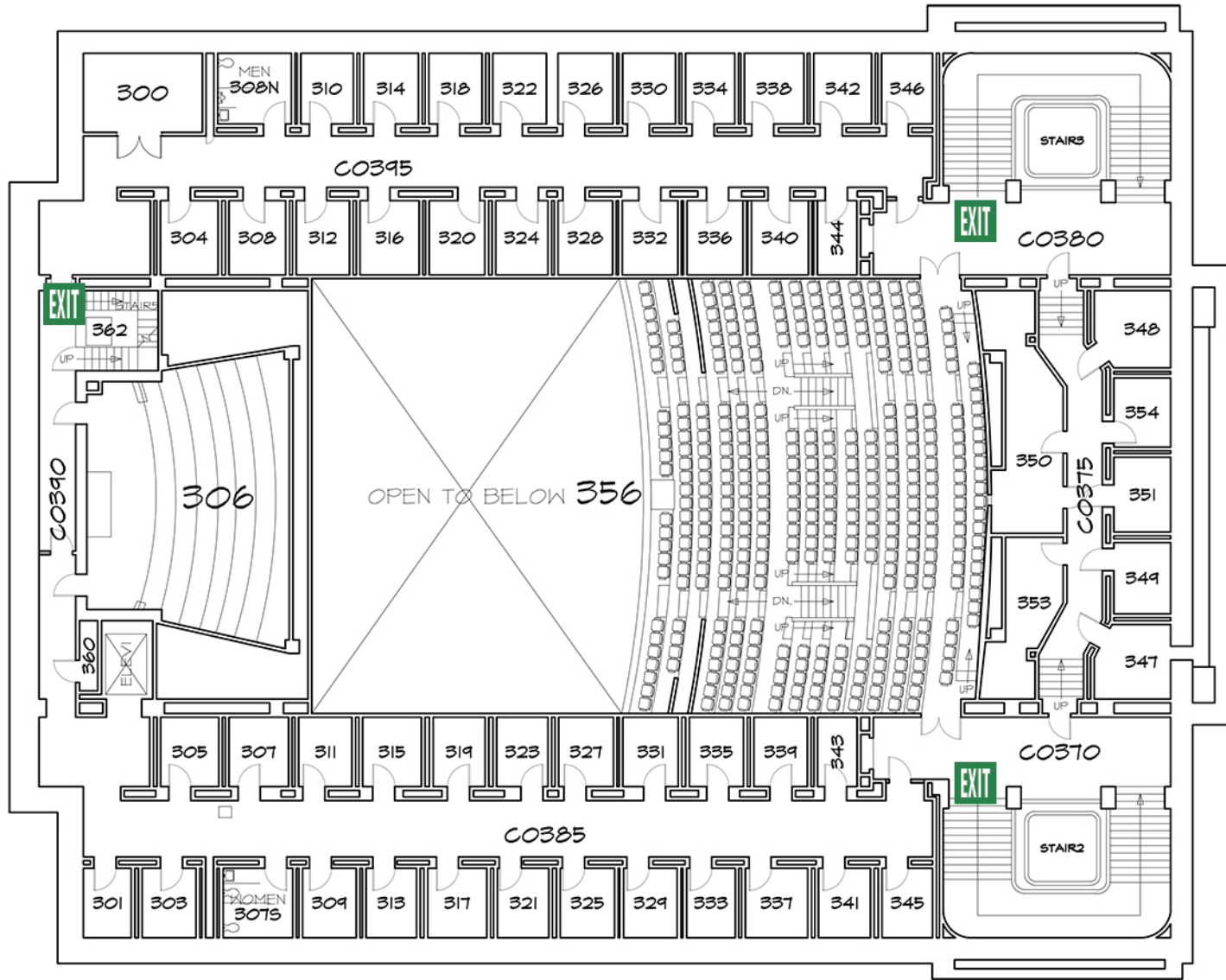
Leaving the area quickly is the best option if it is safe to do so

HIDE

When you can't or don't want to run, take shelter indoors.

FIGHT

As a last resort, you may need to fight to increase your chances of survival



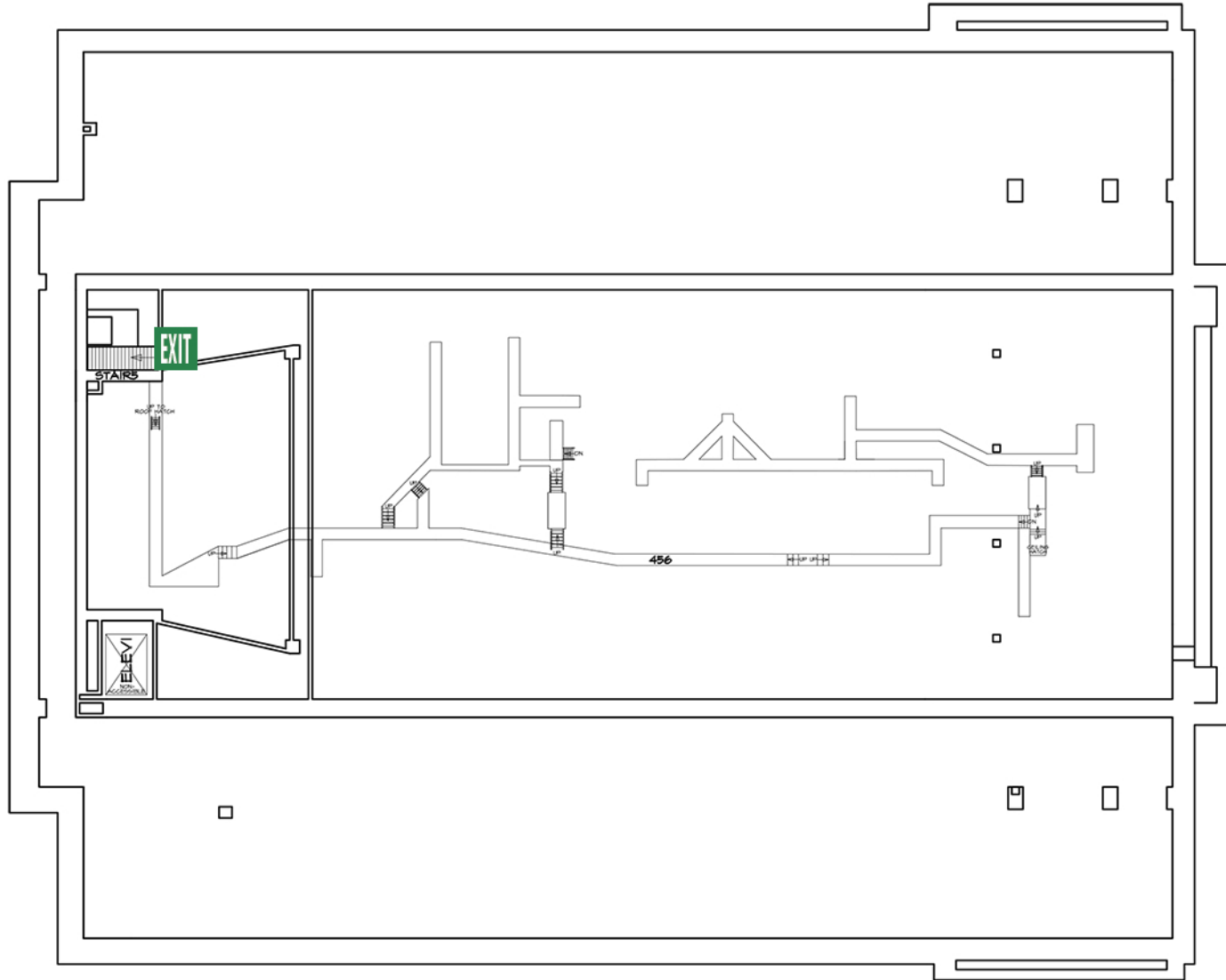
Smith Memorial Hall
 #0010 — 2021/07/21
 Third Floor

Evacuation Assembly Areas:
 1. On Quad BEHIND Foellinger
 2. Inside Main Library

RUN
 Leaving the area quickly
 is the best option
 if it is safe to do so

HIDE
 When you can't
 or don't want to run,
 take shelter indoors.

FIGHT
 As a last resort, you may
 need to fight to increase
 your chances of survival



Smith Memorial Hall
 #0010 — 2021/07/21
 Attic

- Evacuation Assembly Areas:**
1. On Quad BEHIND Foellinger
 2. Inside Main Library

RUN
 Leaving the area quickly
 is the best option
 if it is safe to do so

HIDE
 When you can't
 or don't want to run,
 take shelter indoors.

FIGHT
 As a last resort, you may
 need to fight to increase
 your chances of survival

BUILDING EMERGENCY ACTION PLAN

Smith Memorial Hall u0060 / 805 S. Mathews Ave., Urbana, IL

Appendix B — Employee Evacuation Accountability Form

Basement

Floor Coordinator: William Moersch/ Chip McNeill

Persons within Area of Responsibility	Evacuation Sign-Off
Ronald Bridgewater	
Tito Carrillo	
Jim Pugh	
Chip McNeill	
Joel Spencer	
Smith 04 occupants	
Smith 11 occupants	
Smith 25 occupants	
Smith 2/Max Osawa (GA)	
Ricardo Flores	
Dimitri Georgantonis (GA)	
Smith 4 occupant(s)	
Smith 6-8 occupant(s)	
William Moersch	
Craig Deets	

BUILDING EMERGENCY ACTION PLAN

Smith Memorial Hall u0060 / 805 S. Mathews Ave., Urbana, IL

Floor 1

Floor Coordinator: Larry Gray / Craig Deets

Persons within Area of Responsibility	Evacuation Sign-Off
Chip Stephens	
Christos Tsitsaros	
Smith 106 occupant(s)	
Joan Hickey	
William Heiles	
Ian Hobson (PT Emeritus)	
Smith Lounge	
Larry Gray	
105/107 occupant(s)	
109 occupant(s)	
113 occupant(s)	
Recital Hall	

Floor 2

Floor Coordinator: Ricardo Herrera / Nelson Lee

Persons within Area of Responsibility	Evacuation Sign-Off
Barrington Coleman	
Jerry Siena	
Tim Ehlen	
Rochelle Sennet	
Charlotte Moersch	
Nelson Lee	
Liz Freivogel	
Smith Memorial Room	
Ricardo Herrera	
Sylvia Stone	
Dawn Harris	
Barrington Coleman	
Tim Ehlen	
Meg Freivogel	
Ollie Watts Davis	
Smith RH Balcony	

BUILDING EMERGENCY ACTION PLAN

Smith Memorial Hall u0060 / 805 S. Mathews Ave., Urbana, IL

Floor 3

Floor Coordinator: Larry Gray / Richard Dole (GA)

Persons within Area of Responsibility	Evacuation Sign-Off
Practice Room occupants	
3.5 level room occupants	
Choral Library	
Carly Wingfield (GA)	
Julia Scannel (GA)	
Lewis McAdow (GA)	
Nikolas Caplan (GA)	
Richard Dole (GA)	
Chanmi Lee (GA)	
Mingzi Hu (GA)	
Xiao Yang (GA)	
Luis Rodrigues (GA)	
Skye Junginger (GA)	
Beatrix Santana (GA)	
Caleb Wayman (GA)	
Leon Lewis Nicol (GA)	
Xiaomei Xu (GA)	
Eli Naragon (GA)	
Adib Young (GA)	
Ivan Jiang (GA)	
Yarong Guan (GA)	

BUILDING EMERGENCY ACTION PLAN

Smith Memorial Hall u0060 / 805 S. Mathews Ave., Urbana, IL

Appendix C — Building Shutdown

OSHA Standard 1910.38(c)(3)

Procedures to be followed by employees who remain to operate critical plant operations before they evacuate;

Employees who may remain to shut down critical operations before evacuating

Certain equipment and processes must be shut down in stages or over time. In other instances it is not possible or practical for equipment or certain process to be shut down under certain emergency situations. This condition, which is not unusual for certain large manufacturers operating complex processes, is not typical of small enterprises that normally can turn off equipment or utilities if necessary and evacuate. However some small enterprises may require designated employees remain behind briefly to operate fire extinguishers or shut down gas and/or electrical systems and other special equipment that could be damaged if left operating or create additional hazards to emergency responders (such as releasing hazardous materials).

Each employer must review their operation and determine whether total and immediate evacuation is possible for various types of emergencies. The preferred approach, and the one most often taken by small enterprises, is immediate evacuation of all their employees when the evacuation alarm is sounded.

If any employees will stay behind, the plan must describe in detail the procedures to be followed by these employees. All employees remaining behind must be capable of recognizing when to abandon the operation or task and evacuate themselves before their egress path is blocked. In small establishments it is common to include in your plan locations where utilities (such as electrical and gas) can be shut down for all or part of the facility either by your own employees or by emergency response personnel.

Staff Required for Shutdown during Evacuation

Name	Office Phone	Cell	Critical Actions Required
N/A			